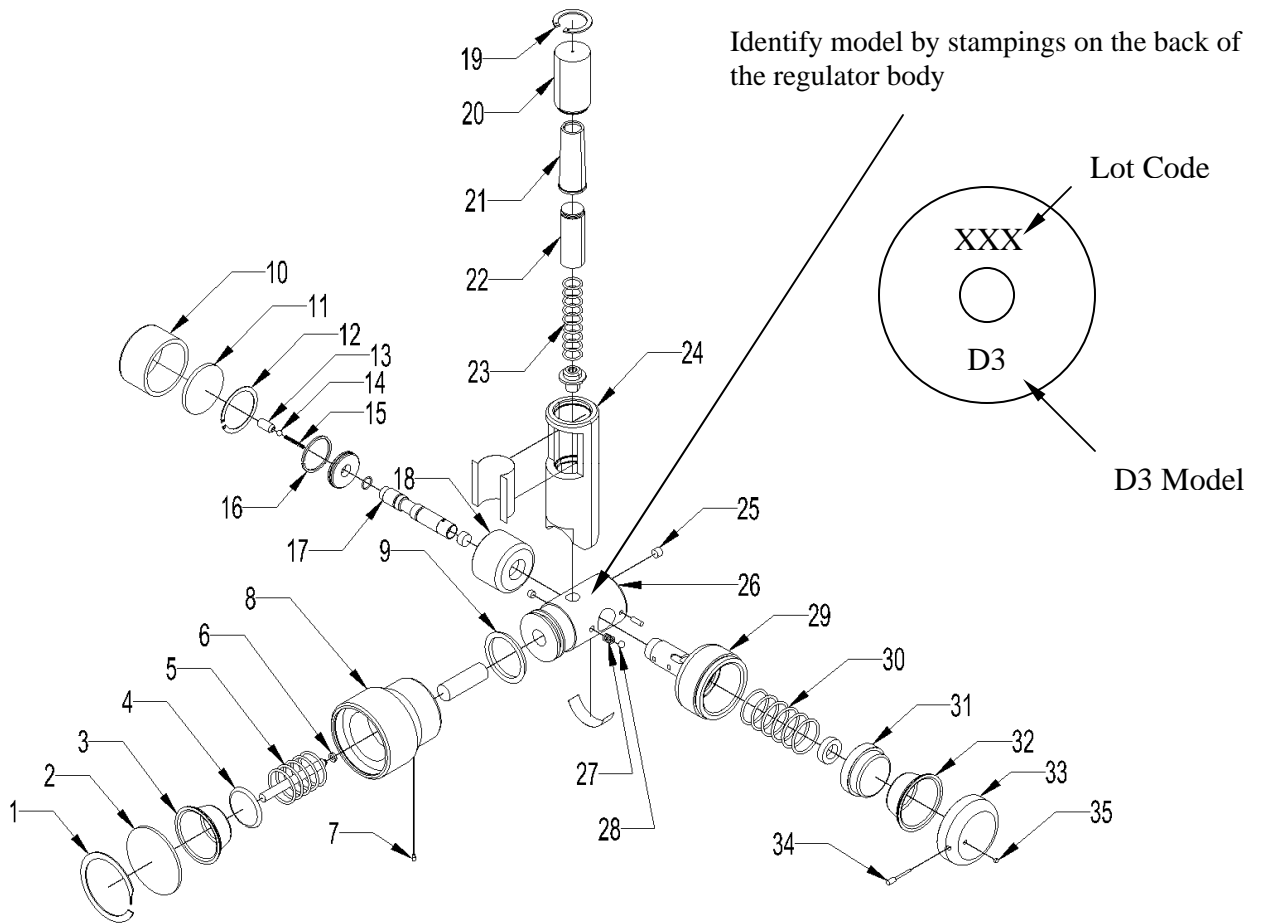


FIGURE 1 – Model 3704D3-

Parts List Addendum for 3704 D3 Regulator



<u>No.</u>	<u>P/N</u>	<u>Description</u>	<u>No.</u>	<u>P/N</u>	<u>Description</u>
1	1465BK	Lens Cap Retaining Ring	20	33040	Gauge View Tube <sup>2</sup>
2	33599	Lens Cap, Model 3704D3	21	33042	Gauge Diaphragm
3	1466	Regulating Diaphragm	22	33036HS	Gauge Piston
4	33673	Piston/Stem Assembly	23	33041	Gauge Spring, 0-200 mmHg
5	2278	Spring D3	24	33035AN	Gauge Body with Label, 200 mmHg
6	1461	Quad Ring	25	33136	Porex Filter
7	33582	Lock Screw	26	33203	Regulator Body Assembly <sup>1</sup>
8	33577	Diaphragm Housing Ass'ly	27	33124	Detent Spring
9	1484	U-Cup	28	33311	Detent Ball
10	33419	Dashpot Cover	29	33428	Control Valve <sup>1</sup>
11	33423	Dashpot Filter	30	33429	Intermitter Spring
12	33440	Dashpot Retaining Ring	31	33194	Intermitter Piston with Magnet
13	33430	Relief Valve Screw	32	33070	Intermitter Diaphragm
14	369	Relief Valve Ball	33	33067AN	Cap
15	33322	Relief Valve Spring	34	33260	Timing Screw
16	33421	Dashpot Ring (1 per spool)	35	33045	Cap Filter
17	33426	Spool <sup>1</sup> with Magnet & Ring			
18	33418AN	Dashpot Body			
19	33038	Retaining Ring			

1. The Spool, Control Valve, and Reg Body are factory matched. Please call for details on replacement.  
 2. For lot numbers before 01G, only the View Tube is needed to replace an earlier View Tube and View Tube Cover.