

THORACIC SUCTION REGULATOR

Boehringer Laboratories, Inc. has set the standard in the medical industry by providing the highest quality, highest value instruments on the market since 1972. Now, the unrivaled performance and rugged durability of **Boehringer Suction Regulators** are available in a model specifically designed for thoracic drainage procedures.

Thoracic Suction Regulator, Model 3750, features a unique high negativity safety vent. This safety mechanism limits maximum suction to 60cm H₂O. It also provides positive pressure relief by venting excess positive pressure.

These suction regulators are indicated for use in trauma, critical care and intensive care units. To ensure safety, it must be used with a chest drainage device that features an underwater seal.

- Designed specifically for thoracic suctioning
- Large, wide open ports provide high flow capacity at the low vacuum levels specific to thoracic drainage
- May be used with disposable chest drainage units that incorporate an under water seal
- Features a pressure relief mechanism to minimize the potential for tension pneumothorax
- 10 Year Warranty
- Patented gauge allows excellent visibility and requires no calibration-ever!

10 YEAR WARRANTY!



ORDERING INFORMATION

Model 3750

Continuous Regulator 0-60 cmH₂O

“SETTING THE STANDARD FOR QUALITY AND SERVICE”

THORACIC SUCTION REGULATOR

SPECIFICATIONS

Materials of Construction

Body-	Anodized Aluminum
View Tube-	Polycarbonate
Piston-	Acetal Copolymer
Diaphragm-	Silicon
Hardware-	Austenitic Stainless Steel
Springs	Phosphor Bronze

Gauge Accuracy: +/- 5% of FSO

Gauge Range: 0-60 cm H₂O

Regulator Accuracy: +/-10% at 200 mm Hg full flow to zero

Cleaning

Mild labware detergents such as Liquinox. Do not use strong Alkali or base cleaning agents such as trisodium phosphate (TSP).

Disinfection

Disinfection by EtO, Autoclave (268° F), Sterrad®, Cidex methods

Dimensions

Gauge only: 1.5" diameter x 4.5" long
Gauge and Regulator: 9" x 2.5" x 4"

Weight

Gauge and Regulator: 2.0 lbs.

Inlet and Outlet Ports

1/8" NPT Female

Disassembly

Gauge may be disassembled using conventional tools, i.e. retaining ring pliers, hex wrenches

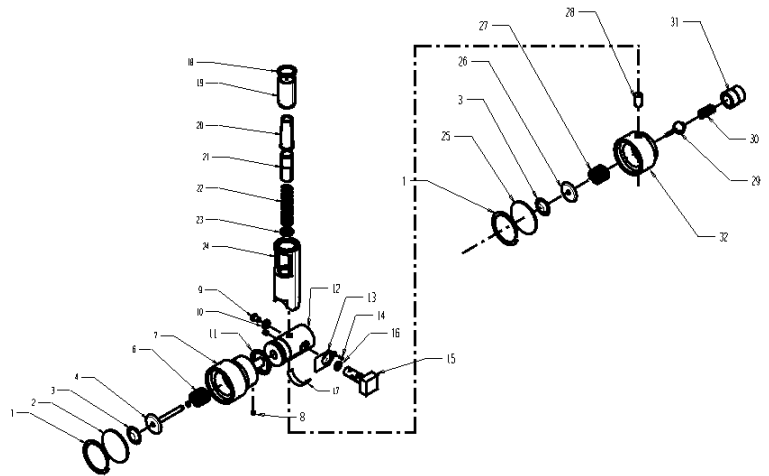
Product Life

10 year product life excepting conditions of abuse

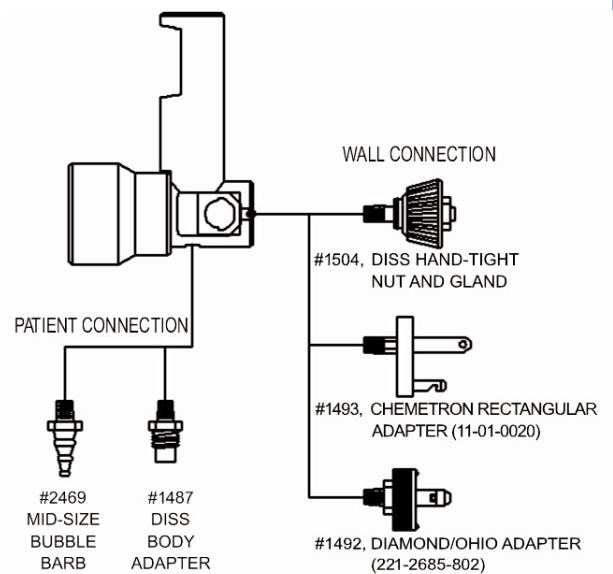
**FITTINGS AND ACCESSORIES ARE
FACTORY INSTALLED TO ENSURE
OPTIMUM PERFORMANCE. BOEHRINGER
LABORATORIES DOES NOT WARRANT USE
OF CUSTOMER-SUPPLIED
FITTINGS.**

EXPLODED VIEW

Model 3750



COMMON FITTINGS



For more information, please contact Boehringer at:

Boehringer Laboratories, Inc.
500 E. Washington St.
Norristown, PA 19401

Call: 800-642-4945
610-278-0900
Fax: 610-278-0907

Web site: www.boehringerlabs.com
Email: info@boehringerlabs.com

P/N 33552
Dwg.#3750.022

2003 Boehringer Laboratories, Inc.©