
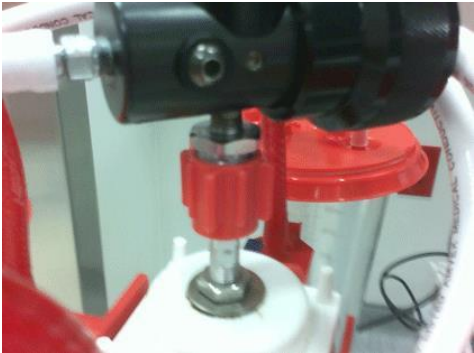




*Caring for Patients' Lives Through Innovation, Quality and Service*

## Suction Fittings Product Catalogue

### In Field use of Fittings:

Wall Side Fitting	Fittings Used
	<p><u>Need:</u> Regulator &amp; Trap bottle mounted on a roll stand.</p> <ul style="list-style-type: none"> <li>• Any BL Regulator</li> <li>• P/N 9100 Trap Bottle</li> <li>• P/N 1487 DISS Body Adapter</li> <li>• P/N 1975 F-F Coupler</li> <li>• P/N 33291 M-M Coupler</li> </ul>
	<p><u>Need:</u> Standard O.R. canister tree setup.</p> <ul style="list-style-type: none"> <li>• 3840 High Vacuum regulator (recommended)</li> <li>• P/N 1487 DISS Body Adapter</li> <li>• P/N 2469 High Flow Bubble Barb</li> </ul>

®

**BOEHRINGER**

*Caring for Patients' Lives Through Innovation, Quality and Service*



Need: 2x Regulator on one outlet with direct canister hookup

- 9063 Regulator Vertical Dual Mount
- P/N 1487 DISS Body Adapter x2
- P/N 905 90 Degree Street Elbow x2
- P/N 33291 1.5" Regulator Extension
- P/N 1975 1/8NPT F-F Coupler
- Any BL Regulator (x2)
- Customer Wall fitting



- P/N 2098 Y-Connector
- P/N 33291 1.5" Regulator Extension
- P/N 2147 1/8NPT M-M Coupler
- Any BL Regulator
- Customer Wall fitting

**Boehringer Laboratories, Inc.**

300 Thoms Drive, Phoenixville, PA 19460 • 800-642-4945 • Fax: 610-278-0907 •  
www.boehringerlabs.com

0000.217 Rev C L217  
Released February 2018



**BOEHRINGER**

*Caring for Patients' Lives Through Innovation, Quality and Service*



Need: For the vacuum regulator to be at a 20° angle

- Any wall fitting
- P/N 2098 Y-Connector
- P/N 2147 1/8NPT M-M Coupler
- Any BL Regulator
- Customer Wall fitting
- P/N 34010 1/8NPT Pipe Plug



Need: For height limitations suction exits at right angle.

- P/N 905 90 Degree Street Elbow
- P/N 2469 High Flow Bubble Barb
- Any BL Regulator
- Customer Wall fitting



- P/N 9086 IV Pole Mount (vertical pole mount)
- P/N 2469 High Flow Bubble Barb
- Any BL Regulator

**Boehringer Laboratories, Inc.**

300 Thoms Drive, Phoenixville, PA 19460 • 800-642-4945 • Fax: 610-278-0907 •  
[www.boehringerlabs.com](http://www.boehringerlabs.com)

0000.217 Rev C L217  
Released February 2018

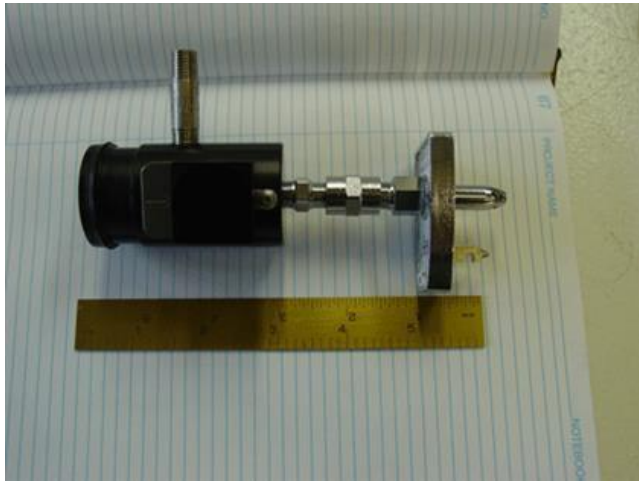
®

**BOEHRINGER**

*Caring for Patients' Lives Through Innovation, Quality and Service*



- P/N 9086 IV Pole Mount (horizontal pole mount)
- P/N 2469 High Flow Bubble Barb
- Any BL Regulator



Need: Added distance from the wall. 1.5" additional added here

- Any vacuum regulator and wall fitting
- P/N 2147 1/8NPT M-M Coupler
- P/N 1975 1/8NPT F-F Coupler



- Any vacuum regulator and wall fitting
- P/N 2468 45° elbow
- P/N 33291 1.5" Regulator Extension
- P/N 1975 1/8NPT F-F Coupler

**Boehringer Laboratories, Inc.**

300 Thoms Drive, Phoenixville, PA 19460 • 800-642-4945 • Fax: 610-278-0907 •  
www.boehringerlabs.com

0000.217 Rev C L217  
Released February 2018

®

**BOEHRINGER**

*Caring for Patients' Lives Through Innovation, Quality and Service*



Need: Add 2.5" additional from the wall.

- P/N 33291 1.5" Regulator Extension
- P/N 1975 1/8NPT M-M Coupler
- P/N 1492 Diamond/Ohio
- P/N 2469 High Flow Bubble Barb



Need: Shorten 3/4" from the wall projector.

- 1504(s) – brings regulator closer to the wall. (DISS Hand tight only)
- P/N 2469 High Flow Bubble Barb



- P/N 9086 IV Pole Mount
- P/N 2468 45° elbow
- Any BL Regulator

**Boehringer Laboratories, Inc.**

300 Thoms Drive, Phoenixville, PA 19460 • 800-642-4945 • Fax: 610-278-0907 •  
www.boehringerlabs.com

0000.217 Rev C L217  
Released February 2018



# BOEHRINGER

*Caring for Patients' Lives Through Innovation, Quality and Service*

The problem



The solution



Need: Suction outlets have less than industry standard 5" center to center distance.

- P/N 905 90 degree Street Elbow
- P/N 2164 1/8NPT M-F Coupler
- Any BL regulator (x2)
- Customer Wall fitting (x2)

**Boehringer Laboratories, Inc.**

300 Thoms Drive, Phoenixville, PA 19460 • 800-642-4945 • Fax: 610-278-0907 • [www.boehringerlabs.com](http://www.boehringerlabs.com)

0000.217 Rev C L217  
Released February 2018



*Caring for Patients' Lives Through Innovation, Quality and Service*

Detailed below is the detailed list and part number of the suction fittings provided by Boehringer.

**Patient Side Connections:**

 <p>P/N 2469 High Flow Bubble Barb</p>	 <p>P/N 1487 DISS Body Adapter</p>	 <p>P/N 9100 Trap Bottle</p>
	 <p>P/N 9084 Sorrenson Connector</p>	

®

**BOEHRINGER**

*Caring for Patients' Lives Through Innovation, Quality and Service*

Wall Fittings:



P/N 1504 DISS Hand Tight



P/N 1493 NCG Chemetron



P/N 1492 Diamond/Ohio



P/N 1496 Puritan Bennett  
Adapter



P/N 1495 Schrader Adapter



P/N 1505 DISS Wrench Tight



P/N 1498 Medstar Oxequip  
Adapter



P/N 1507 All Metal DISS Hand  
Tight. VSS270 Capable



P/N 1497 Oxequip Adapter

**Boehringer Laboratories, Inc.**

300 Thoms Drive, Phoenixville, PA 19460 • 800-642-4945 • Fax: 610-278-0907 •  
www.boehringerlabs.com

0000.217 Rev C L217  
Released February 2018





Caring for Patients' Lives Through Innovation, Quality and Service

### Specialty Suction Fittings

 <p>P/N 1504s Shortened DISS Wrench Tight. This fitting is 5/8" shorter than stock</p>	 <p>P/N 1494 NCG Round Adapter, Note the ROUND latch pin</p>	 <p>P/N 905 90 Degree Street Elbow</p>
 <p>P/N 9088 Ceiling Column Mount</p>	 <p>P/N 2147 1/8NPT M-M Coupler</p>	 <p>P/N 33291 1.5" Regulator Extension</p>
 <p>P/N 1975 1/8NPT F-F Coupler</p>	 <p>P/N 2164 1/8NPT M-F Coupler</p>	 <p>P/N 2098 Y-Connector</p>

®

# BOEHRINGER

*Caring for Patients' Lives Through Innovation, Quality and Service*



1499 DIN Adapter



1511 British Fitting



2468 Elbow, 45 Degrees



P/N 9143 Suction Regulator  
Tether



Wall Connection Kit w/fitting &  
20' of reinforced tubing.

3940 Puritan

3941-Diamond-Ohio

3942-Chemetron 3943 DISS



P/N 9086 IV Pole Mount

**Boehringer Laboratories, Inc.**

300 Thoms Drive, Phoenixville, PA 19460 • 800-642-4945 • Fax: 610-278-0907 •  
www.boehringerlabs.com

0000.217 Rev C L217  
Released February 2018