

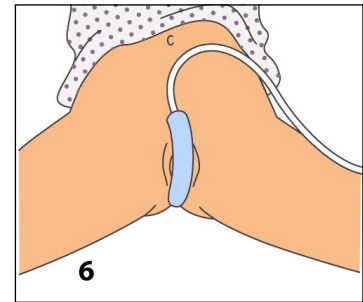
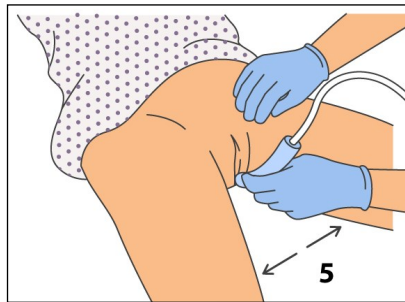
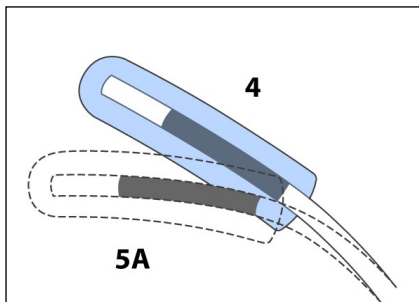
Instructions for Use

Prior to Use:

1. Perform perineal skin assessment and document per hospital protocol
2. Obtain necessary supplies: The CAREDRY™ System, one or two lengths of tubing (depending mounted or free-standing canister), and a suction canister.

Setup:

1. Using a length of tubing, connect a clean collection canister to a suction regulator that is set to 125 mmHg.
2. Attach an additional length of tubing to the canister, turn suction to CONTINUOUS and listen for airflow.
3. Remove the Wand from packaging and connect to tubing and collection canister.
4. Remove the Sponge from packaging. Insert the tip of the Wand into the open end of the Sponge until reaching the bottom of the channel.
5. Separate patients' legs, gluteus, and labia. Tuck device vertically (Sponge down) between anatomy and close legs.
 - A). Note: If needed, the Wand can be bent and shaped to conform to the patient's anatomy.
6. Gently close legs and place/drape the tubing and connected side of the Wand in a comfortable location where it is unlikely to become dislodged.
7. Device is now ready for use.



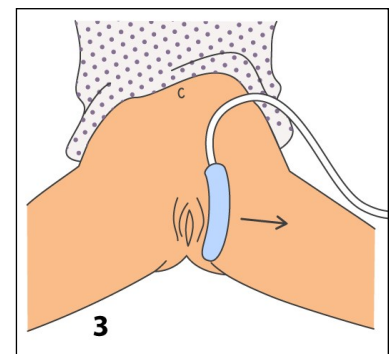
In Use:

1. Continue to assess skin condition and ensure tubing is connected while in use.
2. Assess device periodically to ensure tubing is not a discomfort to patient
3. Replace when soiled, and every two days or per hospital protocol.
4. Replace suction tubing and empty and/or replace collection canister as needed per hospital protocol.

Replacement:

1. Obtain replacement System
2. Turn suction to OFF.
3. Separate patients' anatomy, gently remove device, and dispose of the entire System.
4. Assess skin integrity & document per hospital protocol.
5. Using a new System, repeat the setup instructions, beginning at step 3.

* Sponge may be considered a potential biohazard. Dispose of according to



BOEHRINGER®

Instructions for Use

Description

The CAREDRY™ System is a non-invasive urinary management system for females. The System features a conformable Wand, and a proprietary wicking Sponge.

Indications

The CAREDRY™ System is indicated for external urinary incontinence management in female patients.

Contraindications

Do not use for applications other than collection of urine, or on patients with normal urinary function.

Do not use on patients with bowel incontinence or heavy menstruation without adequate management to reduce risk of contamination.

Disposal

Dispose per hospital protocol or sooner if there is evidence of contamination.

Empty or replace collection canister as needed, per hospital protocol.

Storage & Shelf Life

Store for up to 2 years or the date on the packaging, whichever is earlier. Store in a climate controlled space between 60 and 80 degrees Fahrenheit.

Warnings

Rx Only This product is for use by or on the order of a physician.



CAREDRY™ System is for single patient use. Reuse may adversely affect the performance and risks cross contamination of patients. Do not attempt to clean.



CAREDRY™ System should be disposed of per your facility's bio-hazardous waste protocols.



CAREDRY™ System is packaged clean; but non-sterile



Latex Free



CAREDRY™ System must only be attached to vacuum systems. Do not attach to compressed air, nitrogen, or oxygen.

Ensure wall outlet meets the requirements of NFPA 99. Non-compliant wall outlets may affect regulator performance.

Discontinue use if skin breakdown or allergic reaction occurs

Do not insert into any body cavity

Do not use with portable suction pumps

Do not attach to intermittent suction.

Do not use the Sponge without the Wand.

Do not use with unregulated suction



Boehringer Laboratories, LLC.
300 Thoms Drive, Phoenixville, PA 19460
1-800-642-4945 www.boehringerlabs.com
Made in USA



Caring for Lives through Innovation, Quality and Service

Part Number	Description	Ordering
7660	CAREDRY™ System	1 Box (20 Units)