

## Complete 360° Urine Collection

CareDry<sup>®</sup> is designed to deliver more complete urine collection with its 360° design.

- Circumferential Design for Superior Incontinence Control
- Optimal Leak Protection with Compassionate Collection
- Enhanced Certainty for Simplified Nursing and Patient Care



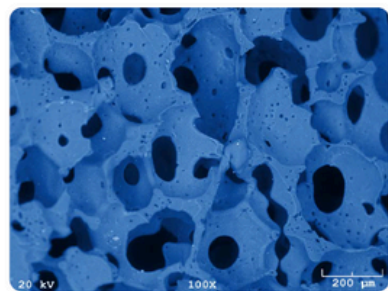
DEMO



WEBSITE

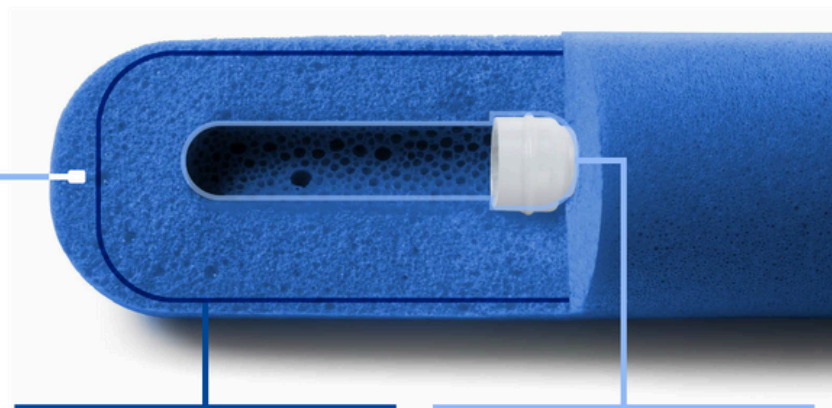


# The CareDry<sup>®</sup> Difference Three Phases of Circumferential Suction



## 1. Captures

Hydrophilic, antimicrobial-infused foam holds 2x its original dry weight in liquid, when oriented vertically, for maximum containment



## 2. Transfers

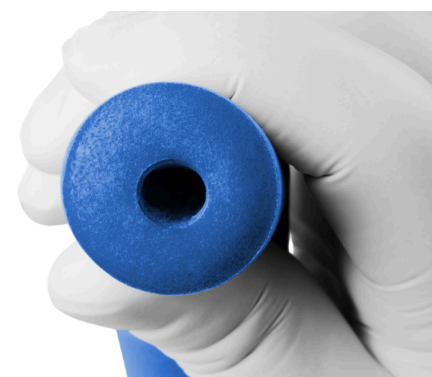
Optimal suction effect is distributed evenly through the circumference of the sponge to maximize collection pathway

## 3. Removes

Continuous, high-flow suction removes collected fluid quickly and completely

## 360-Degree Suction

Optimal pore sizes and foam structure offer double the surface area to let nurses deliver more complete suction and urine collection.



## Anatomically Conforming

Medical-grade foam protects against leaks in any position by contouring to the patient's unique body shape.



## 24 to 48-hour Change Interval\*

Antimicrobial sponge actively inhibits harmful bacteria formation on the sponge\*\*, allowing for extended patient use.

## Product Ordering

Description	Part Number	Ordering
CareDry <sup>®</sup>	7660	20 units/box

*\* indicated for up to 48 hrs of use, compared to 8-12 hr change interval of other female external catheters*

*\*\* data on file with Boehringer Laboratories*